



FALL - WINTER
2020





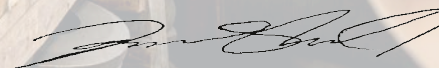
About Us....

Proudly operated since 1895, we have prided ourselves in producing quality headwear in addition to having “second-to-none” customer service. Four generations deep of wisdom and experience, we have consistently been able to carry out our legacy, while adapting to necessary changes over the years. Employing artists who love what they do, we take pride in manufacturing every hat & cap that goes through our history-filled Canadian doors!

We thank you for your support throughout the years, and look forward to continuing our exquisite journey together.



Marvin Shostak,
President



Jarred Shostak,
Vice-President

Imperial Pure Beaver



Imperial Grand Beaver
Color: Black
Brim: 2 1/4"



Santini
Color: Bronze
Brim: 2 1/8"

Long-Hair Saluki



Geneva
Color: Silver
Brim: 2 1/4"



Jazz
Color: Burgundy
Brim: 2 3/4"

***See Page 22 for color options*

Baffin Silk Collection



Blues
Color: Steel
Brim: 2"



Belfast
Color: Chestnut
Brim: 2 1/2"



Florence
Color: Blue Mix
Brim: 2 1/4"



Humphries
Color: Bordeaux
Brim: 2 1/4"



Hollywood
Color: Camel
Brim: 1 5/8"



Velencia
Color: Black
Brim: 3"

***See Page 22 for color options*

Prestige Collection



Soho
Color: Rose
Brim: 3" Flat



Jackson
Color: Silver Belly
Brim: 2 3/4"



Prince
Color: Black
Brim: 2 1/2"



JohnnyD
Color: Camel
Brim: 2 3/4"



Bel-Air
Color: Lt. Navy
Brim: 2 1/2"



Sinclair
Color: Burgundy
Brim: 3"

***See Page 22 for color options*

Prestige Collection



Wexford
Color: Sapphire
Brim: 2 1/2"



Norfolk
Color: Coffee
Brim: 2"



Dynasty
Color: Silverbelly
Brim: 2 1/2"



Toronto
Color: Burgundy
Brim: 1 5/8"



Stingy
Color: Jet Grey
Brim: 1 5/8"



Estate
Color: Midnight
Brim: 2 1/4" Contrast Sewn

***See Page 22 for color options*

Prestige Collection



Jonesy

Color: Earth Brown

Brim: 2 5/8" Dimensional



Hoss

Color: Ruby Red

Brim: 3"



Belvedere

Color: Camel

Brim: 2 1/4"



Feather

Featherweight Furfelt

Color: Sapphire

Brim: 2 1/4"



Derby

Color: Gunmetal

Brim: 2" Pencil Curl



Homburg

Color: Black

Brim: 2 5/8" Pencil Curl

***See Page 22 for color options*

Prestige Collection



470

Colors: Black & Kangaroo Only

Crown: 4 1/2", 5 1/4", 5 1/2" (shown)

Brim: 3", 3 1/4", 3 1/2" Flat, Bound



EQ Derby

Color: Charbrown

Brim: 1 1/2" Pencil Curl



EQ Homburg

Color: Midnight

Brim: 1 3/4" Pencil Curl



5275

Colors: Black & Kangaroo Only

Brim: 3 1/4"

***See Page 22 for color options*

Heritage Wool



Bellingham
Color: Navy
Brim: 2 1/2"



City
Color: Caramel
Brim: 1 5/8"



Ireland
Color: Burgundy
Brim: 3"



Staple
Color: Grey
Brim: 2"



Crossover
Color: Black
Brim: 2 5/8" Outback

***See Page 22 for color options*

Heritage Wool



Explorer
Color: Black
Brim: 2 5/8" Flat



Andy
Color: Navy
Brim: 1 5/8"



Donovan
Color: Burgundy
Brim: 2"



Traveller
Color: Camel
Brim: 2 1/4" Down

***See Page 22 for color options*

Heritage Wool



Trooper
Color: Caramel
Brim: 3 1/8" Flat



Manchester
Color: Putty
Brim: 3 1/2" Flat



Langley
Color: Grey Mix
Brim: 2 1/4" Down

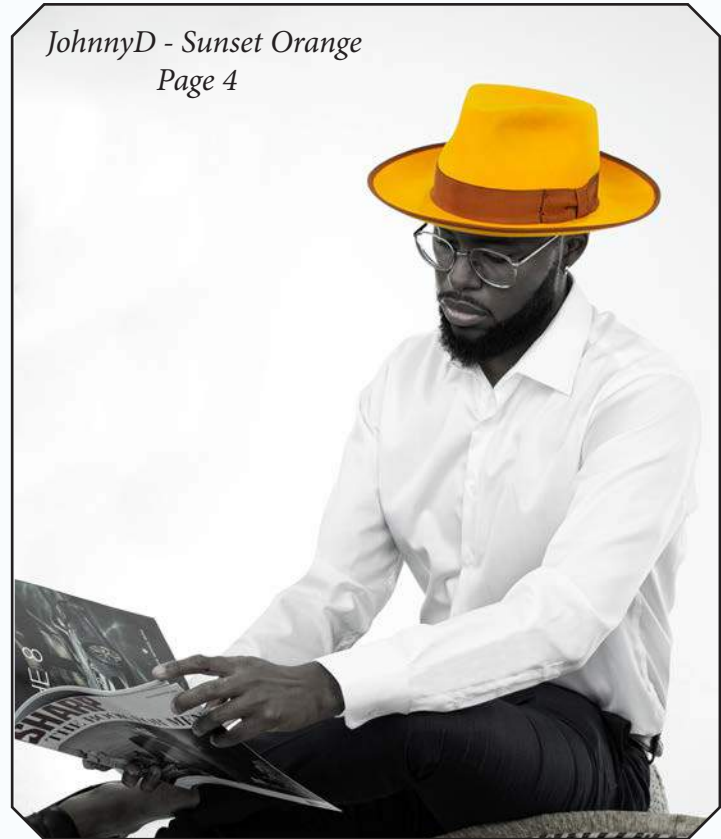


Eastman
Color: Black
Brim: 2 1/2" Flat

***See Page 22 for color options*



*Jackson - Silverbelly
Page 4*



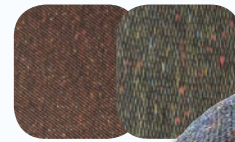
Italian Made Caps



Broker 410
Color: Grey/Blue Multi



Prime 411
Colors: Black, Navy, Grey, Tan,
Rust, Dk. Olive, Camel (New)



Broadway 412
Colors: Midnight, Rust, Olive



Birmingham 415
Colors: Grey, Tan



Empire 416
Colors: Brown Patch, Navy Patch



Sicily 417
Colors: Brown, Navy, Grey

Italian Made Caps



Nappa 418
Genuine Leather
Colors: Cognac, Black, Chocolate



Granville 420
Water-Repellant
Colors: Navy, Olive, Black



Raegan 424
Colors: Olive, Lt. Brown,
Lt. Blue, Grey



Westport 426
Colors: Navy Patch, Brown Patch



Dillan 428
Colors: Tan/Brown Patch, Grey/Navy Patch

Italian Made Caps



Dublin 431
Colors: Rust, Navy, Brown



London 432
Colors: Blue, Camel, Grey, Rust



Dupree 433
Colors: Cognac, Navy



Portland 436
Colors: Grey, Lt. Brown,
Olive, Blue

**All Italian Caps are available in sizes S - XXL*

Canadian Made Caps

8001 HT

Harris Tweed Ivy

Colors: Bronze, Black, Grey

S - XXL



9020 HT

Harris Tweed Newsboy

Colors: Grey, Bronze, Black

S - XXL



Canadian Made Caps



6010 HT

Harris Tweed Deerstalker/Sherlock

Colors: Black, Bronze, Grey

Size: S - XXL

910

Deerstalker/Sherlock

Wool Blend Houndstooth

Colors: Grey, Brown

Size: S - XXL



8331

Wool Blend Houndstooth

Colors: Brown, Grey

Size: S - XXL



7325

Wool Blend

Color: Patchwork

Sizes: XS - XXXL or

6 1/2 - 8

Canadian Made Caps

7335

100% Wool

Colors: Black, Camel,
Navy, Grey

Size: S - XXL



7316

100% Wool

Colors: Navy, Grey,
Black, Camel

Sizes: S - XXL



9003

Wool Blend

Color: Patchwork

Size: S - XXL



Canadian Made Caps

8321

100% Wool

Colors: Black, Grey,
Brown, Navy, Camel

Size: S - XXL



9000

100% Wool

Colors: Camel, Navy,
Brown, Grey, Black

Size: S - XXL



Beaver Brand Caps



R100
100% Wool
Colors: Red, White, Pink,
Navy, Camel, Brown, Grey,
Black, Hunter, Cognac (New)



R103
100% Wool
Color: Red/Black
****R104 Assorted Wool Blend Plaids**



R106 HT
Harris Tweed
Colors: Grey, Bronze, Black



R110 Reversible
Cotton/Twill
Color: Camo/Blaze

***All Beaver Brand caps are available from sizes 6 3/8 to 8 and come with a quilted lining and hidden earflaps*

Beaver Brand Caps



R120

100% Wool

Colors: Black, Red, Camel, Grey, Navy



R115

Wool Blend

Color: Patchwork



RW403

Cotton/Twill Camo

Colors: Sky Blue, Pink

20

***All Beaver Brand caps are available from sizes 6 3/8 to 8 and come with a quilted lining and hidden earflaps*

Beaver Brand Caps



S200
100% Wool
W/ or W/O Pom
Colors: Navy, Grey, Black, Brown,
Hunter, Camel
** Red/Black Plaid Style S203*
*** Assorted Plaids Style S204*

T302
100% Wool
Color: Red/Black



T300
100% Wool
Colors: Camel, Navy, Hunter,
Grey, Brown, Black (not shown)



T301
Corduroy
Colors: Camel, Wine,
Navy, Gravel, Khaki (not shown)

***All Beaver Brand caps are available from sizes 6 3/8 to 8 and come with a quilted lining and hidden earflaps*

Felt Colors

Imperial Pure Beaver

Black
Silverbelly
Midnight
Beaver Brown

Saluki Long-Hair Beaver

Black Bronze
Navy Burgundy
Silver Loden
Powder Blue Ruby
Blueberry Camel
Belly

Baffin Silk

Black Bronze
Navy Blue Mix
Steel Bordeaux
Chestnut
Heather Grey Camel

Prestige Rabbit Furfelt

Black Midnight
Jet Grey Lt. Navy
Gunmetal Dark Olive
Light Grey Burgundy
Mist Grey* Silverbelly*
Charbrown Violet*
Earth Brown Ruby Red*
Coffee Powder Blue*
Camel Sunset Orange*
Kangaroo Rose*
Sapphire

Heritage Wool

Black
Grey
Brown
Navy
Camel
Caramel
Olive
Burgundy
Red
Putty
Grey Mix

**Additional \$4.00 for Pastel Colors*

22

***Swatch Cards Available Upon Request*

Magill Hat Mfg. Inc.
9600 St-Laurent Blvd., Suite 503
Montreal, QC H2N 1R2, Canada

Tel: 514-381-8561
Fax: 514-381-8795
Email: info@magillhats.com
Web Page: www.magillhats.com
Instagram: @magillhats

SALES REPRESENTATIVES

UNITED STATES:

Ron Winfield
(NJ, PA, MD, DE, DC, VA, NC, SC)
T: 301-535-0541
F: 514-381-8795
Email: watgatehatman@aol.com

Doug Klabzuba (Corporate)
Beaver Brand Label
T: 314-640-6444
F: 514-381-8795
Email: douglabzuba@gmail.com

Skip Daniel
(ID, OR, WA, UT, NV, North CA)
T: 208-863-9820
F: 208-365-9459
Email: skipbr549@gmail.com

Rick Rob
(NE, KS, MO, OK, AR)
T: 405-833-7529
F: 800-407-7198
Email: rjr.enterprises@hotmail.com

CANADA:

Pam Ireland
(BC, AB, SK, MB)
T: 888-687-3361
F: 888-687-3361
Email: pamirelandagency@telus.net

Roy Rasmussen
(ON)
T: 519-241-1458
F: 519-208-0997
Email: valdemardesigns@gmail.com

Jarred Shostak (Corporate)
(QC)
T: 514-381-8561
F: 514-381-8795
Email: jarred@magillhats.com

Ordering:

Please allow a minimum of 6 weeks for all "In-Season/At-Once" orders.
Private Label available upon request.

Minimum Orders:

Catalog Styles: 3 pcs per style.
Custom Styles: 1 dozen per color, per style.
Orders that do not meet the minimum quantity are subject to a \$25 surcharge.